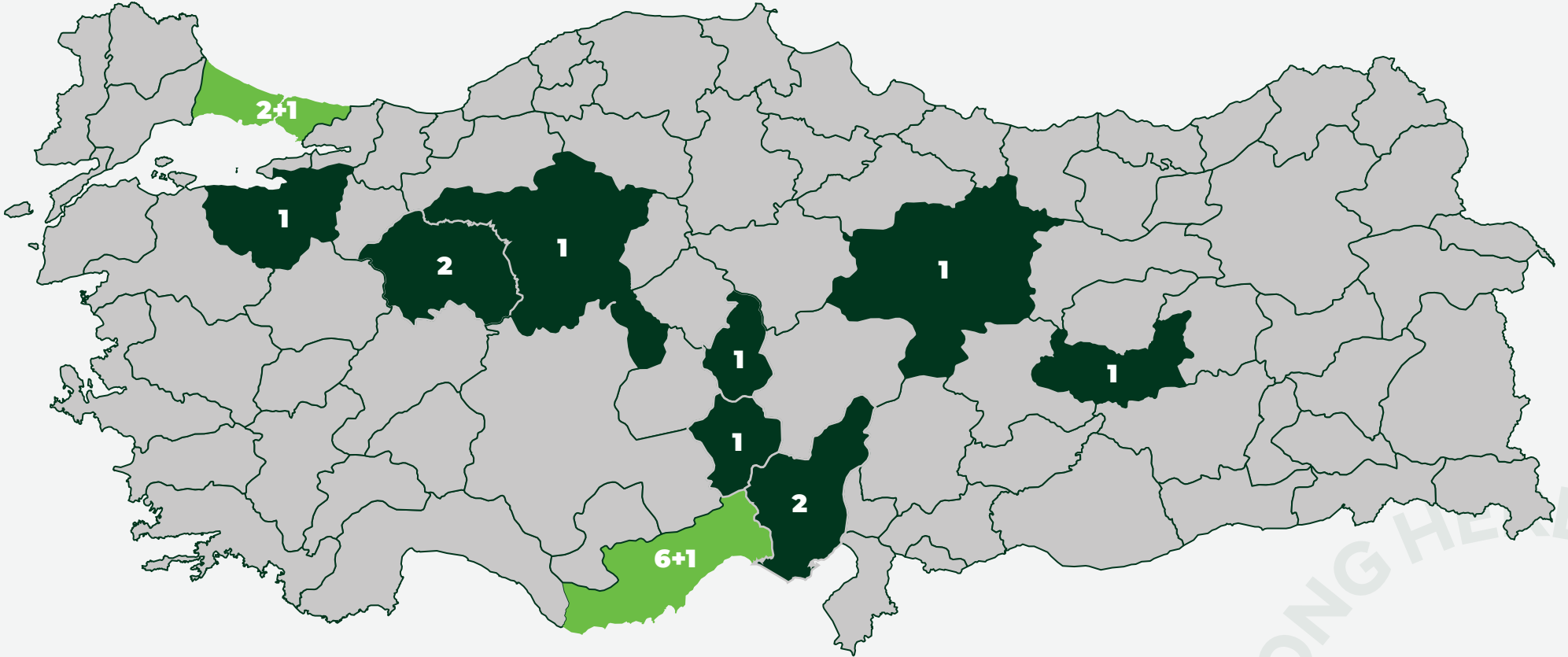


L O B A | COFFEE & BAKERY

## OUR LOCATIONS



**Current Franchises: Mersin(6) - Nevşehir - Niğde - Eskişehir(2) - Sivas - Adana(2)  
Bursa - Ankara - İstanbul(2) - Elazığ**

**Franchises Under Construction: Mersin(1) - İstanbul(1)**

YOU BELONG HERE

2017

Mersin  
Loba Cafe



Our journey began in **2017** at Mersin in Turkey. As **Loba Coffee & Bakery**, we quickly became a popular meeting spot by offering international cuisine and boutique desserts.

2021

Nevşehir  
2000 Evler



In **2021**, we've opened our first franchises in **Nevşehir** city of Turkey to introduce coffee lovers to innovative flavors.



  
Mersin  
Vatan Street



2023  
Niğde  
Bor Street

In **2023**, we expanded our flavor network to **Niğde**, **Vatan Street** in Mersin and **Eskişehir** in Turkey.

  
Eskişehir  
Eti Street



  
Mersin  
Loba Terrace





**Sivas**  
University



**2024**

**Mersin**  
Sahil Coffee

In **2024**, we continued to grow with new branches in **Sivas, Adana, Eskişehir, Bursa** and **Fuat Morel** in Mersin.



**Adana**  
Türkmenbaşı



**Eskişehir**  
Adalar



**Bursa**  
FSM



**Mersin**  
Çarşı





**Mersin**  
Fuat Morel



**2025**

**Adana**  
Güzelyalı



We kicked off **2025** with a strong start by opening our first branch in **Adana**!



**Ankara**  
Çukurambar



**Mersin**  
Çeşmeli

Shortly after, we welcomed guests to our new locations in **Mersin** and **Ankara**.



**İstanbul**  
Airport



**İstanbul**  
Bakırköy



2026

**Mersin**  
University  
Street



**Elazığ**  
Beyzade

By continuing to grow  
all across **Türkiye**,  
we also opened our **İstanbul Airport**,  
**İstanbul Bakırköy** and **Elazığ Beyzade**  
branches to welcome our guests!

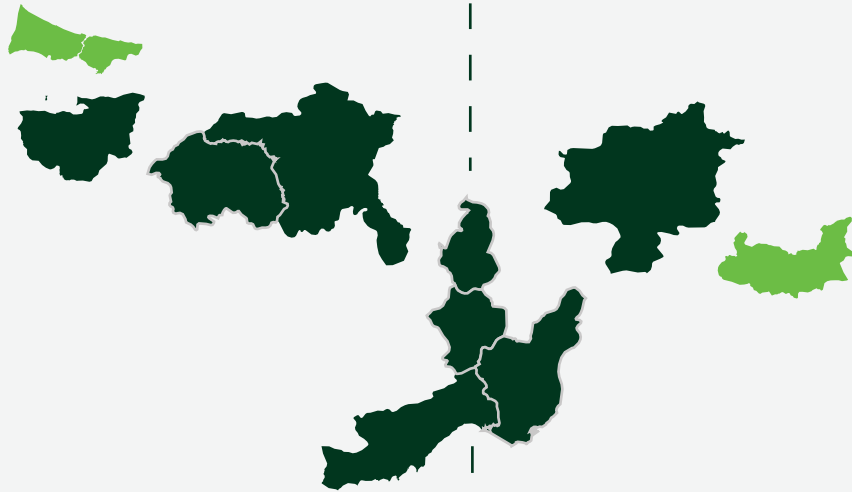


At the beginning of **2026**, our route is set for  
**Mersin University Street** and **İstanbul Bağdat Street**!

  
**İstanbul**  
Bagdat Street



you  
belong  
here!



We continue to grow each day, bringing our flavors to new destinations.

Our goal is to reach **50 franchises** by the end of **2026**.

**Loba Coffee & Bakery** is proud to offer the art of taste and coffee in every cup and slice, aiming to provide a unique experience at every location.

L O B A | COFFEE & BAKERY



**First Loba Franchise**  
Adnan Menderes Boulevard,  
Mersin, 2017



LOBA | COFFEE & BAKERY



**Head Office**  
Vatan Street, Mezitli  
Mersin, 2023

Operations Center, Production Facility, Central Warehouse

## OPERATIONS CENTER

**The Operations Center**, located within **Loba Coffee & Bakery's** headquarters branch, ensures the seamless management of all our franchises. From order processes and logistics planning to quality control and supply chain management, all operational activities are coordinated here. Our modern office spaces and well-equipped meeting rooms enable our teams to work efficiently and make strategic decisions quickly. By providing solution-oriented support for the needs of our growing franchise network, our **Operations Center** ensures sustainable operations and continuous growth.





## OUR FRESH & HANDCRAFTED FLAVORS

At **Loba Coffee & Bakery**, we never compromise on the quality or freshness of our flavors. Since the beginning of our journey in **Mersin**, we have been passionately and meticulously crafting each of our cakes, tarts, ice creams, chocolates, and snacks by hand.

In **September 2023**, we moved to our new central production facility located in the same area as our **Vatan Street** branch an exciting step that further fueled our passion.

In our spacious **1,000 m<sup>2</sup>** production space, we create mono cakes, tart cakes, ice cream, chocolate, mini snacks, and bakery goods around the clock using the freshest ingredients.

Our new central facility is not only a larger production hub but also a center of innovation, allowing us to refine and elevate our flavors even further.

Every product is crafted with expertise and care, then delivered quickly to our branches while maintaining its freshness. This ensures that our guests experience the same high-quality, fresh, handcrafted flavors with every visit.

At **Loba Coffee & Bakery**, every creation is treated as a work of art. What matters most to us is not only delivering great taste, but doing so with the freshest ingredients every single day. Blending traditional techniques with modern touches, our diverse product range is constantly evolving and improving to meet the expectations of our valued guests.

## PRODUCTION FACILITY

The **Loba Coffee & Bakery Production Facility** ensures that all our products are prepared hygienically, with high quality and freshness. Our skilled team processes carefully selected ingredients using modern equipment to maintain our signature taste and quality standards. Daily production plans are carried out meticulously, with quality checks at every stage. This way, every product delivered to our franchises preserves its original freshness and flavor. Our **Production Facility** is a vital part of **Loba Coffee & Bakery** reliable and sustainable production approach.



## PRODUCTION EQUIPMENT

As **Loba Coffee & Bakery**, we utilize advanced and technological equipment in our production processes to ensure the highest quality standards. Our premium machines not only enhance efficiency but also guarantee consistent and superior product quality. Our investments reflect our commitment to maintaining the highest levels of customer satisfaction and product standards. Thanks to our modern and sophisticated equipment, we deliver innovative solutions in our production processes, setting us apart in the industry.



YOU BE  
L

## OUR STORAGE AND DISTRIBUTION PROCESSES

At **Loba Coffee & Bakery**, a strong logistics and supply chain management system supports the seamless and efficient operation of all our branches. Our central warehouse, located on the -1 floor of our headquarters, serves as the core of these processes. Here, all products required by our branches are stored with high-standard inventory management practices to ensure quality and consistency.

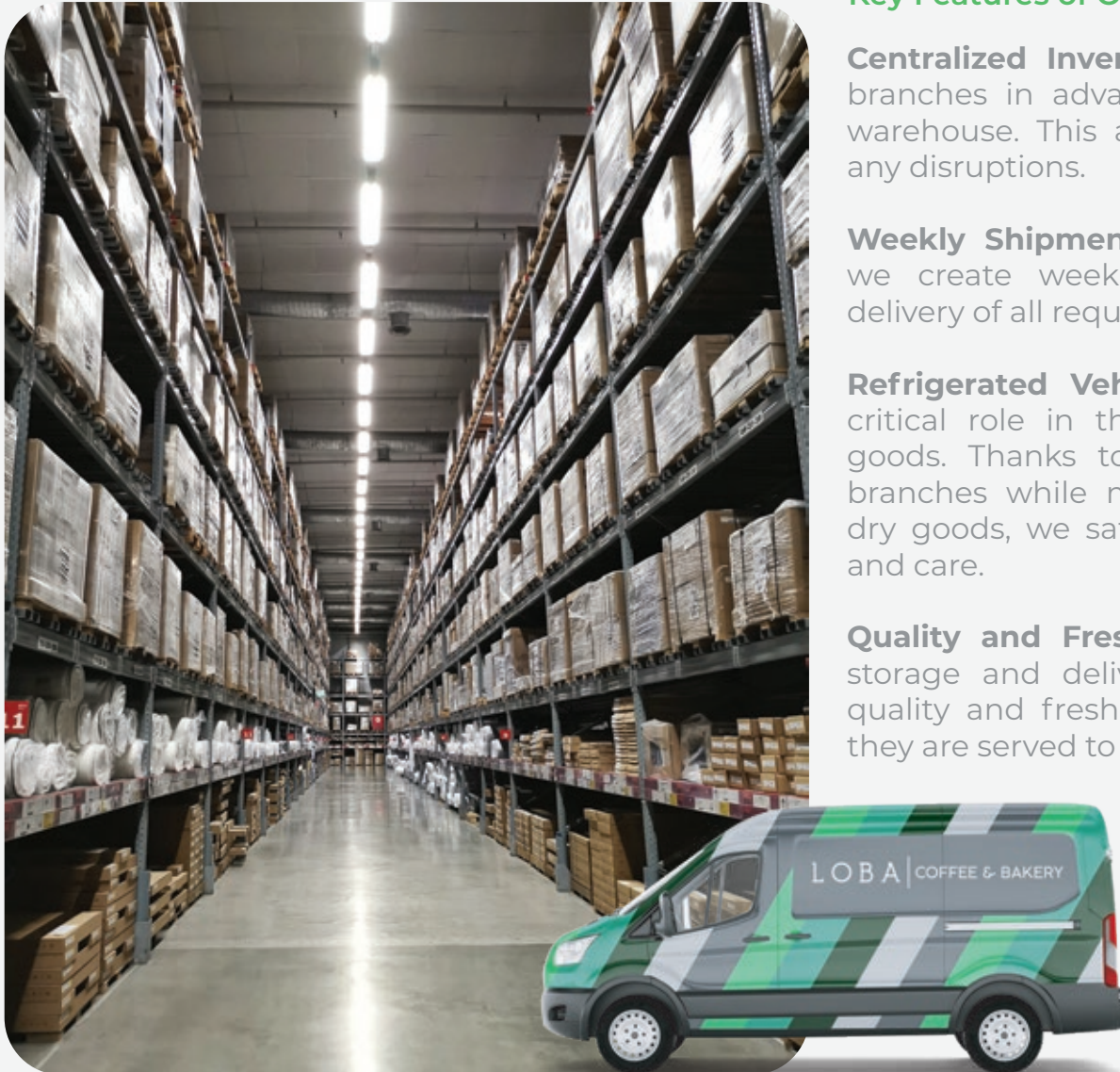
### Key Features of Our Storage and Distribution Processes:

**Centralized Inventory Management:** By anticipating the needs of our branches in advance, we keep the requested materials stocked in our warehouse. This allows us to respond quickly and efficiently in case of any disruptions.

**Weekly Shipment Planning:** Based on the demands of our branches, we create weekly shipment plans to ensure timely and complete delivery of all required materials.

**Refrigerated Vehicle Fleet:** Our fleet of refrigerated vehicles plays a critical role in the daily production and delivery of fresh and frozen goods. Thanks to these vehicles, we ensure that products reach our branches while maintaining their freshness and quality. In addition to dry goods, we safely transport cold chain products with full compliance and care.

**Quality and Freshness:** The high standards we apply throughout our storage and delivery processes ensure that our products retain their quality and freshness from the moment they reach our branches until they are served to our customers.





BAKERY





C  
O  
F  
F  
E  
E  
  
&  
  
B  
A  
K  
E  
R  
Y





Bor Street, Niğde, 2023



2000 Evler, Nevşehir, 2021

Eğri Köprü, Sivas, 2024



Türkmenbaşı, Adana, 2024







Çarşı, Mersin, 2024





Fuat Morel, Mersin, 2024





Güzelyalı, Adana, 2025

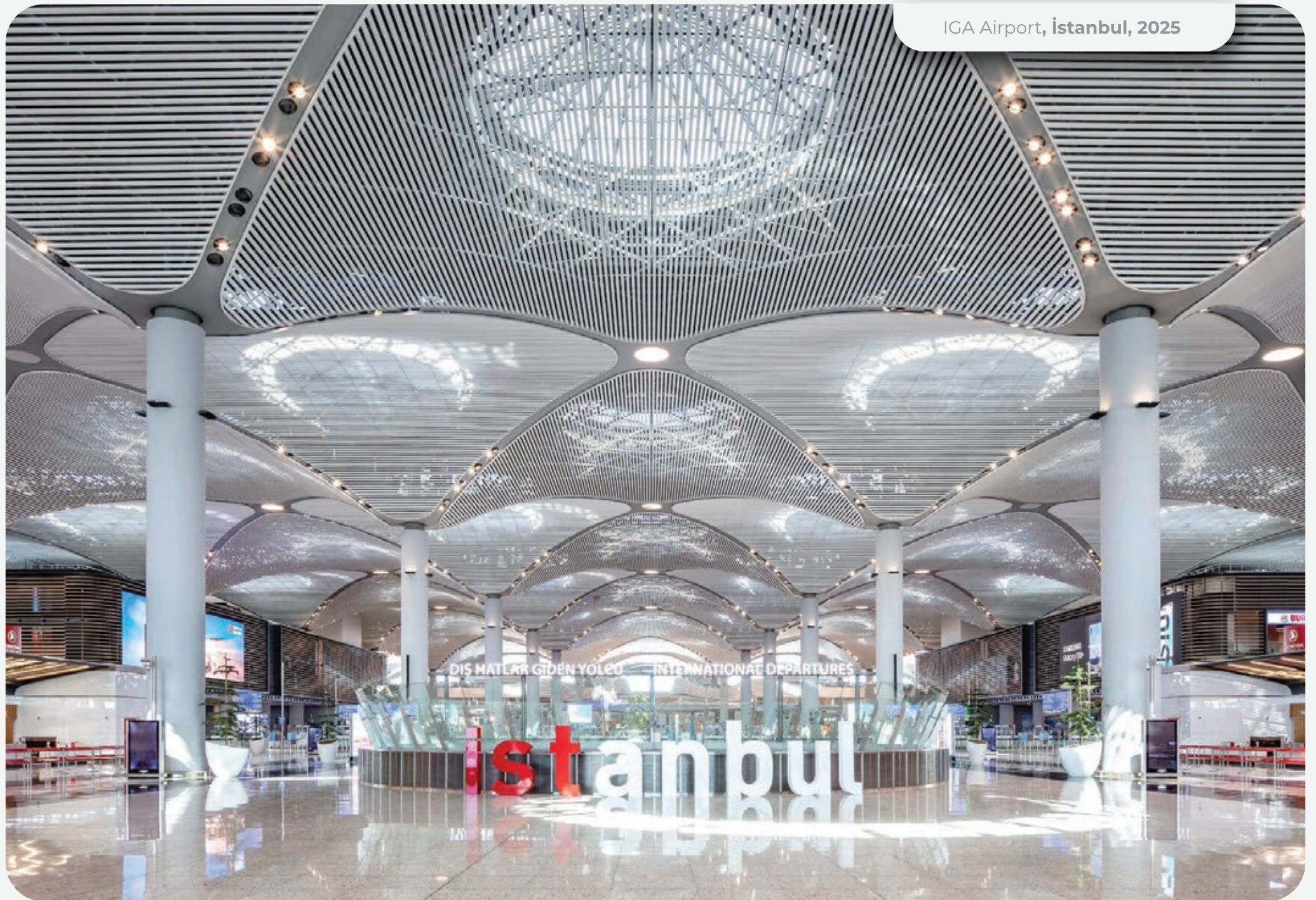




Çeşmeli, Mersin, 2025

Çukurambar, Ankara, 2025





IGA Airport, İstanbul, 2025



IGA Airport, İstanbul, 2025



Bakırköy, İstanbul, 2025

# LOBA COFFEE & BAKERY





Bakırköy, İstanbul, 2025

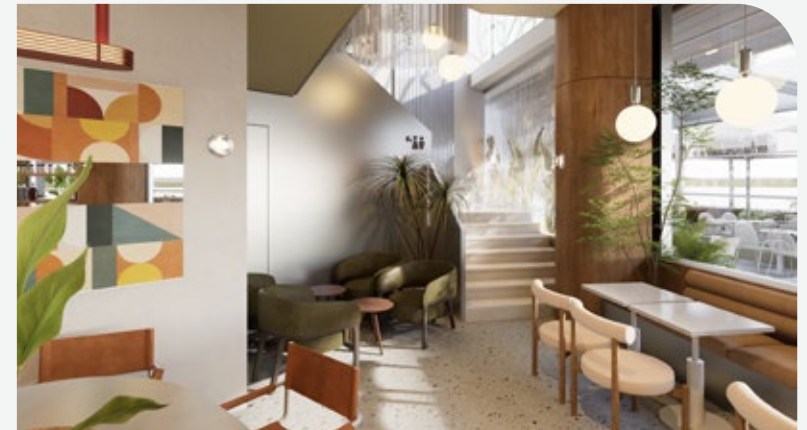


Beyzade, Elaziğ, 2025





University Street, Mersin, 2026



COFFEE  
LOBA  
BAKERY

[www.loba.com.tr](http://www.loba.com.tr) [info@loba.com.tr](mailto:info@loba.com.tr) [@lobacoffee](https://www.instagram.com/lobacoffee)

[#youbelonghere](https://www.instagram.com/lobacoffee) [#lobacoffeebakery](https://www.instagram.com/lobacoffee)